

www.strawblanket.com

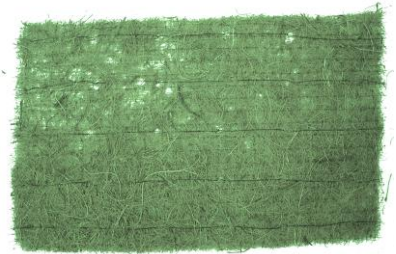
P5000 Double Net

Contents:	100% Polypropylene
Netting:	Double Polypropylene Permanent
Thread:	Permanent
Roll Size:	75 sq yards/ 62.71 sq meters
Width:	7.75 feet/ 2.44 meters
Functional Longevity:	permanent, 10+ years
Best Use:	0.5:1 slopes, High-flow, roadways

P5000 is a fully Permanent blanket. The netting is made from Double Polypropylene. The thread is Permanent, while the filament of matrix is 100% Polypropylene.

Blankets can be produced from 50 SY to 1,000 SY and be from 4 ft. to 16 ft. wide.

As described in Federal Highway Administration's Standard Specification FP-03 in Section 713.17 and as described by ECTC as a Type 5.A.



Test Method Description	Standard Testing
Mass/Unit Area ASTM D 6475	8.72 oz/sq yd
Tensile Strength –MD ASTM D 6818	125 lbs/ft*
Tensile Strength –TD ASTM D 6818	125 lbs/ft*
Thickness ASTM D 6525	0.25+ inches*
Light Penetration ASTM D 6567	25%
Water Absorption ASTM D 1117, ECTC TASC 00197	0%
Elongation –MD ASTM D 6818	35%
Elongation –TD ASTM D 6818	35%
C Factor	<0.25@0.05:1*
Permissible Shear Stress	6.00 lbs/ft.*
Permissible rate of flow	10 ft/s*
Enviroscape ECM certifies that the above criteria is met by this specified product and that it meets requirements as described in the Federal Highway Administration's Standard Specification FP-03 in Section 713.17 and as described by ECTC as a Type 5.A. *MARV-Minimum Average Roll Value	